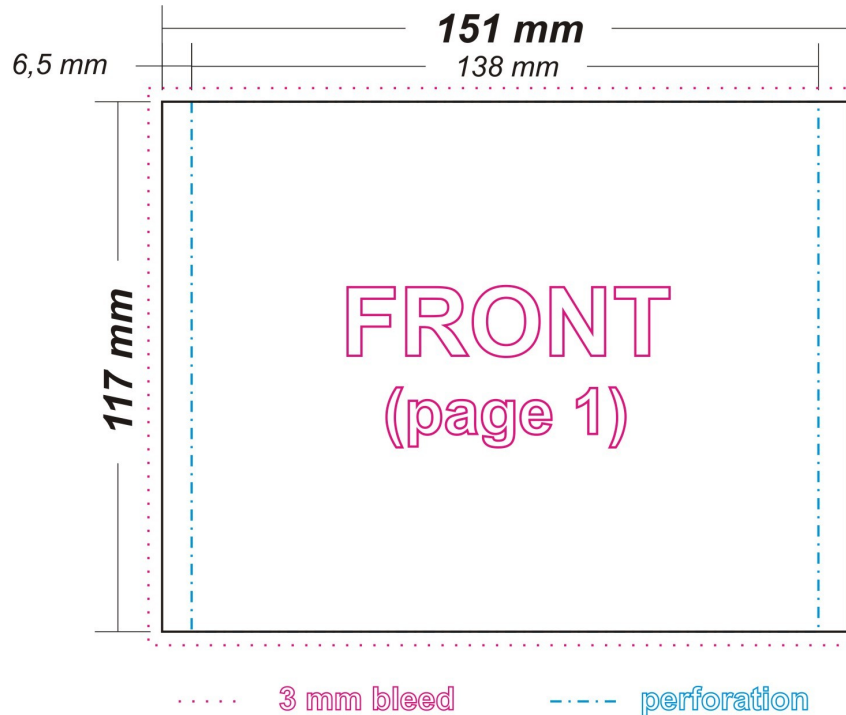


**SPECIFICATION OF THE INLAY (151x118)**  
**WITH PERFORATION FOR FOR CD-BOX (1CD, 2CD, MULTIBOX, BRILLANT)**

1. One project with 3mm bleed on every side (according to the draw):



2. Offset printing (standard colour processing CMYK or special colours PANTONE)
3. Necessary open files with fonts converted into curves in one of the following formats:

<b>PC</b>	<b>COREL DRAW</b>	<b>ILLUSTRATOR</b>	<b>PHOTOSHOP</b>	<b>INDESIGN</b>	<b>QUARK</b>	<b>TIFF</b>	<b>EPS</b>
<b>MAC</b>		<b>ILLUSTRATOR</b>	<b>PHOTOSHOP</b>	<b>INDESIGN</b>	<b>QUARK</b>	<b>TIFF</b>	<b>EPS</b>

**ATTENTION!**

*After receiving of the project, our graphic designer will prepare a jpg and send it back to the Customer to approval.*

4. Under Colour Reductions (UCR), overall ink coverage must not exceed 320%.
5. Solid areas of black must be backed with no less than 40-50% of cyan.
6. Trapping is necessary to compensate for register tolerance when printing.
7. Total trimming tolerances of + 0.5 mm are essential for finishing. This should be taken into consideration for the layout and type area design. Care should also be taken that tolerance of + 0 / -1 mm are maintained with the trimmed format of the final product.
8. For the printing of CMYK the approved cromalin or matchprint as a colour proof (screening of 150lpi, resolution of 2540dpi) must be supplied.

Not providing the colour proof by the Customer means, that they accept the print without the colour proof and that they won't lay claim to the incompatibility of the colours with their expectations.